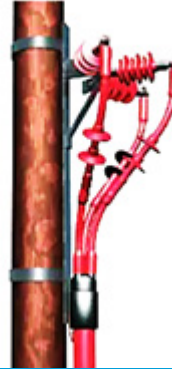


XLPE High Voltage Termination

Indoor



Outdoor



AVAILABLE FROM
NEPEAN ELECTRONICS

NEPEAN Power is a proven leader in the supply and manufacture of quality engineered solutions, products and technologies. Established in 1994, through the commitment of our dedicated team we have become a supplier of choice.

3 Core 11kV XLPE Cable Termination Indoor & Outdoor

XLPE cable termination kits using heat shrink technology are suitable for indoor or outdoor terminating of medium/high voltage (MV-HV) 3 core cables up to 12kV.

Used to terminate 11kV/12kV power cables into MV-HV switchgear, transformer, motor or cable boxes both indoor & outdoor 11kV cable termination versions available.

11KV CABLE TERMINATION TESTING & SELECTION

Shrink Polymer Systems test 11kV heat shrink joints and terminations as detailed in CENELEC standards HD 628 S1 and 629.1 S2:2006 encompassing VDE 0278 and IEC 60502.

The following table enables the heat shrink termination kit selection for 3 core indoor & outdoor XLPE cables up to 12kV – customised terminations available to suit all types of high voltage polymeric cables.

Ordering Information

Part No.	Description
NSY-11/3.1D	3 Core "XLPE" Indoor Term. 25-50mm Double E
NSY-11/3.2D	3 Core "XLPE" Indoor Term. 70-120mm Double E
NSY-11/3.3D	3 Core "XLPE" Indoor Term. 150-240mm Double E
NSY-11/3.4D	3 Core "XLPE" Indoor Term. 300-500mm Double E
WSY-11/3.1D	3 Core "XLPE" Outdoor Term. 25-50mm Double E
WSY-11/3.2D	3 Core "XLPE" Outdoor Term. 70-120mm Double E
WSY-11/3.3D	3 Core "XLPE" Outdoor Term. 150-240mm Double E
WSY-11/3.4D	3 Core "XLPE" Outdoor Term. 300-500mm Double E
NSY-11/1.1	Single Core "XLPE" Indoor Term. 25-50mm
NSY-11/1.2	Single Core "XLPE" Indoor Term. 70-120mm
NSY-11/1.3	Single Core "XLPE" Indoor Term. 150-240mm
NSY-11/1.4	Single Core "XLPE" Indoor Term. 300-500mm
WSY-11/1.1	Single Core "XLPE" Outdoor Term. 25-50mm
WSY-11/1.2	Single Core "XLPE" Outdoor Term. 70-120mm
WSY-11/1.3	Single Core "XLPE" Outdoor Term. 150-240mm
WSY-11/1.4	Single Core "XLPE" Outdoor Term. 300-500mm

	Technical Data
Cable Termination	Heat Shrink
Termination Location	Indoor or Outdoor
Voltage	11kV/12kV
Cable Insulation Type	XLPE EPR (Polymeric)
Number of Cores	3 Core
Conductors	25sqmm, 35sqmm, 50sqmm, 70sqmm, 95sqmm, 120sqmm, 150sqmm, 185sqmm, 240sqmm, 300sqmm, 400sqmm, 500sqmm
Heat Shrink Tail Length	700mm
Suit 11kV Cables	BS6622, BS7835, BS7870, BS6883, BS7917 & IEC60502-2

Property	Typical Data
Ac withstand (under rain)	45kV/1min
Ac withstand (without rain)	45kV/1min
Impulse withstand	±105kV/10times
Dc withstand	-52kV/15min
Ac withstand	35kV/4h
Partial dis	≤10Pc(1.73Uo)