

Industrial PC



NOTE - CONTAINS BATTERIES

NEPEAN Power is a proven leader in the supply and manufacture of quality engineered solutions, products and technologies. Established in 1994, through the commitment of our dedicated team we have become a supplier of choice.

The NEPEAN Power Industrial PC's incorporate a highly integrated design, which ensures silent operation and compact efficiency. All NEPEAN Power Industrial PC's are smaller than an A4 piece of paper, and uses power supply which is 80% less than traditional PC's (150W).

Features

- Processor: Onboard Intel Core i9 10880H 2.3GHz Octa Core 16 thread
- Graphics: Intel UHD Graphics 630
- Operating System: Windows 10 (standard)
- Storage: SSD 128GB(standard)
- Memory: 16GB DDR4(standard)
- Ports: 4 USB 3.0, 2 USB 2.0, 1 Type C
- Wireless: 2.4G or 5G Wi-Fi with 2 Antennas
- HD Output: 1 HDMI port, supports 4k output and dual display with DP1.2 port
- 2 LAN Ports: Gigabit RJ45 port speed up to 1Gbps
- 1 Kensington lock hole
- 2 in 1 Wi-Fi Bluetooth

X0423 - XX - XX - XX

- ▶ **Memory**
16 = 16GB RAM
32 = 32GB RAM
64 = 64GBRAM
- ▶ **Storage**
00 = 128GB SSD
05 = 512GB SSD
10 = 1TB SSD
- ▶ **Operating System**
07 = Windows 7
10 = Windows 10

Power and Working Environment

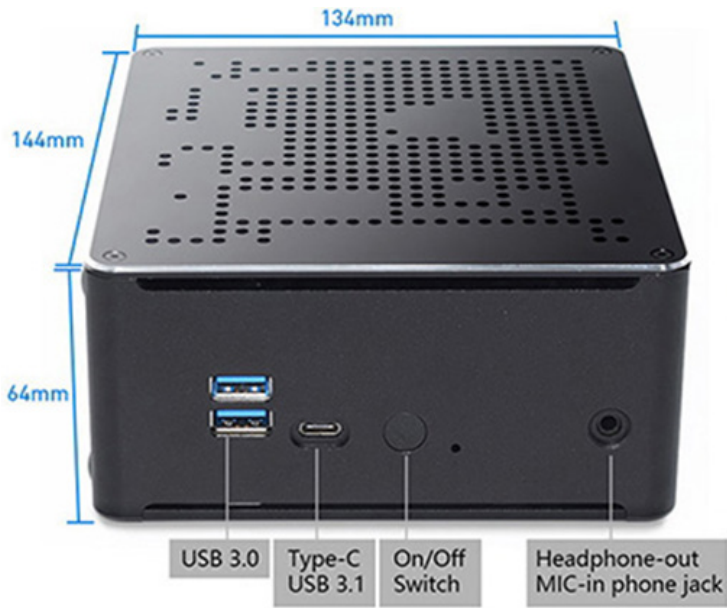
- Input: 100-240V AC/50-60Hz (power supply)
DC 12V ~ 19V, recommend 19V/3 ~ 5A (direct supply)
- Operating Temperature: 0°C/70°C
- Storage Temperature: -20°C/80°C
- Supports 64-bit computing

Ordering Information

Part Number	Description
X0438	12.1" Industrial Touch Monitor
X0436	17" Industrial Touch Monitor
X0444	19" Industrial Touch Monitor
X0416-SF	6+2 Fibre Ports, 10/100M Managed Industrial Ethernet Switch
EP070	Real Time Clock
MKB-65-TB-MDT	IP65 Stainless Keyboard. 65 Keys. With Roll Ball
MKB-65-TP-MDT	IP65 Stainless Keyboard. 65 Keys. With Scratch Pad
MKB-65-MDT	IP65 Stainless Keyboard. 65 Keys.
SKB-87	IP68 Keyboard 87 Keys. Black
SM-500-OP	IP68 Black Mouse USB2.0
X0423 - MBR1	For mounting on surfaces
X0423 - MBR2	For mounting when upgrading from previous model
CITEC-CONV	Citec Programming

Industrial PC

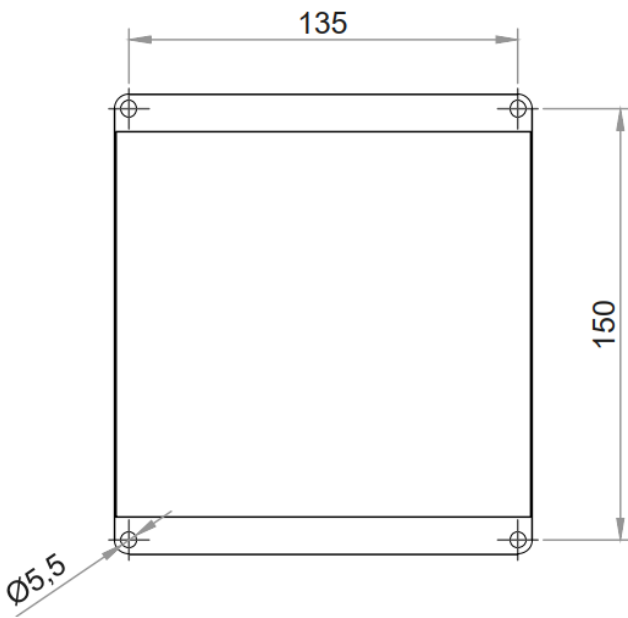
Front



Back

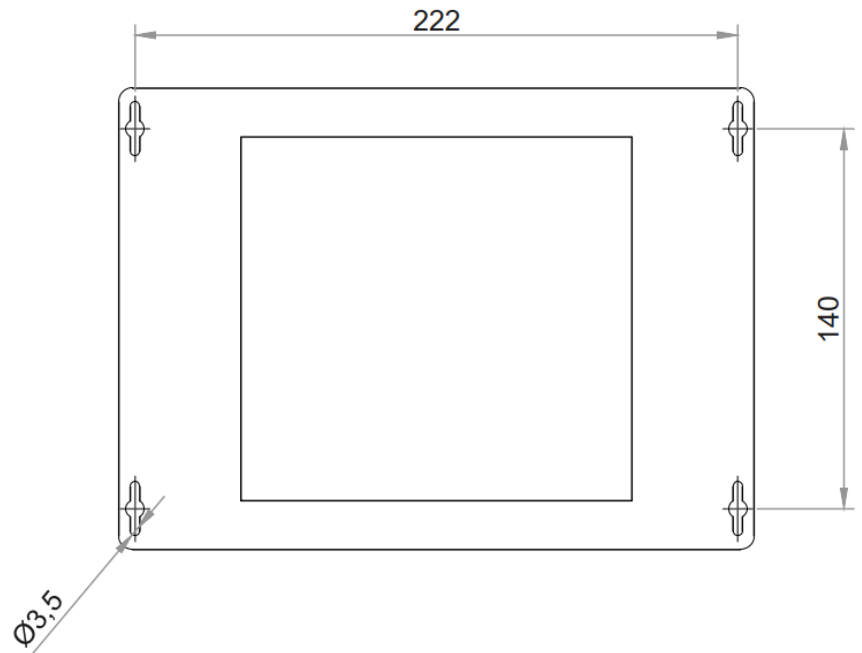


Dimensions, Ports and Connections



X0423 - MBR1 Braket Dimensions

Adaptor plate for standard mounting



X0423 - MBR2 Braket Dimensions

Adaptor plate for previous model, please see note on previous page

Please note: When upgrading from previous model, addition mounting plates are needed.



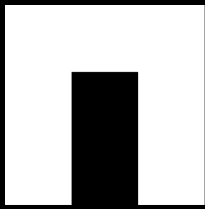
NEPEAN
Power

www.nepeanpower.com

For more information please contact:

P: +61 2 4088 2790

E: power@nepean.com



NEPEAN
Power

Underground Mining Industrial PC

**UNDERGROUND
MINE SAFE
NO BATTERIES**

Front



Back



Features

- Processor: Intel Core i7-10870H Processor, 8 core 16 thread, 2.2GHz, turbo 5.0 GHz, 16MB Cache
- BIOS: AMI, ACPI supported
- Graphics: Intel® UHD Graphics
- Operating System: Win 8/10/11 and all kind Linux OS
- Storage: Support 1 x 2.5 inch SATA laptop HDD or 1TB SSD, 1 x mSATA SSD, 1 x M.2 SSD
- Memory: Max 32G DDR4 2400/2666MHz, 1 x 260 pin SO-DIMM
- Function: Auto power on after power loss, PXE Boot, RTC Wake Up, etc
- Ports: 4 x USB 3.0, 4 x USB 2.0,
- HD Output: 3 x HD 4K output
- 2 In 1 Wi-Fi Bluetooth
- Case Material: Full Brushed Aluminum Alloy;
- Dimensions: 25.5 x 15.5 x 8 cm
- I/O: 1 x Intel i211 + 1 x i219 10/100/1000 BaseT Gigabit RJ45 Lan. 1 x half height mini PCIe WiFi + 1 x Full size mini PCIe WiFi/4G slot + 1 x SIM card slot. 4 x RS232+ 2 x RS232/RS422/RS485 COM Port(with 5V/12 power output). 1 x PS2 + 8 x bits GPIO. 1 x SPK + 1 x MIC, High Definition Audio Controller. 1 x DC Power interface
- Warranty: 30 days free defective replacement and 3 years free repair.
- TDP: 45W
- Weight: NW 2.0kg, GW 3.5kg
- Package Content: 1 x Mini PC; 1 x power adapter; 1 x power cord; 2* Antennas(optional); etc

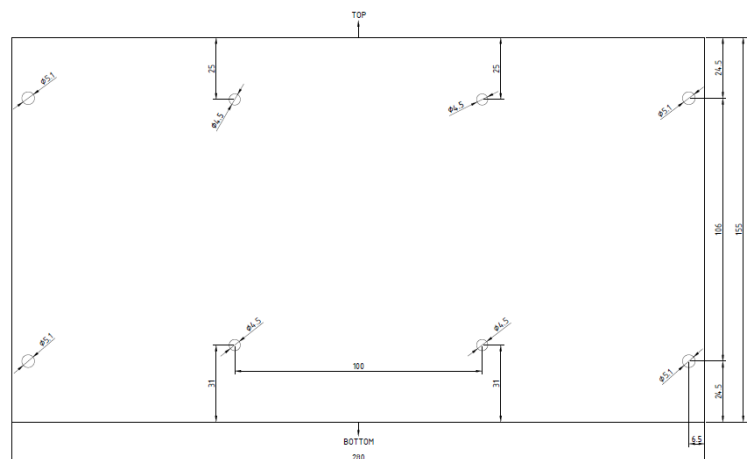
Power and Working Environment

- Power Supply: DC 12V-19V In
- Operating Temperature: 0°C/70°C
- Storage Temperature: -10°C/60°C
- Supports 64-bit computing
- Relative humidity: 0~90% relative humidity

Ordering Information

Part Number	Description
G14- I7-10870H	Ind. PC 16G RAM, I7-108070H - 1TB SSD
G14 Adaptor	G14 Mounting Bracket for 19.5 Industrial LCD Monitor

G14 Adaptor - Mounting Bracket



NEPEAN
Power

www.nepeanpower.com

For more information please contact:

P: +61 2 4088 2790

E: power@nepean.com