

# 1000V Fuses

AVAILABLE FROM  
NEPEAN ELECTRONICS



NEPEAN Power is a proven leader in the supply and manufacture of quality engineered solutions, products and technologies. Established in 1994, through the commitment of our dedicated team we have become a supplier of choice.

The RG5 range of fuses from NEPEAN Power offers protection against overload and short-circuit in electric lines (type gG), also available for protection of semiconductor parts and equipment against short-circuit (type aR) and protection of motors (type aM). Rated voltage up to 1200V. Rated current up to 75A. Working frequency 50Hz AC. Rated breaking capacity up to 80kA. Compliant with GB13539 and IEC269.

## Features

- Variable cross-section fuse element made from pure copper or silver sealed in cartridge made from high-duty ceramic or epoxy glass
- Fuse tube filled with chemically treated high-purity quartz sand as arc-extinguishing medium
- Dot-welding of fuse element ends to the terminals ensures reliable electric connection and forms insert knife type contacts
- Striker may be attached to the fuse link to provide immediate activation of microswitch to give various signals or cut the circuit automatically

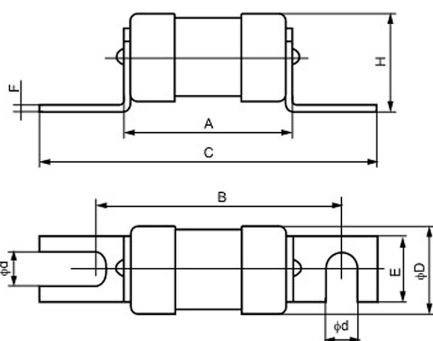
## Characteristics

The time current characteristics shown on rear page relate to mean pre-arcing times and are accurate to within a manufacturing tolerance of  $\pm 10\%$  related to current.

## AC Short-Circuit Performance

The range has been tested to BS2692 as follows:

- TAC & TSC - 63kA 1200V

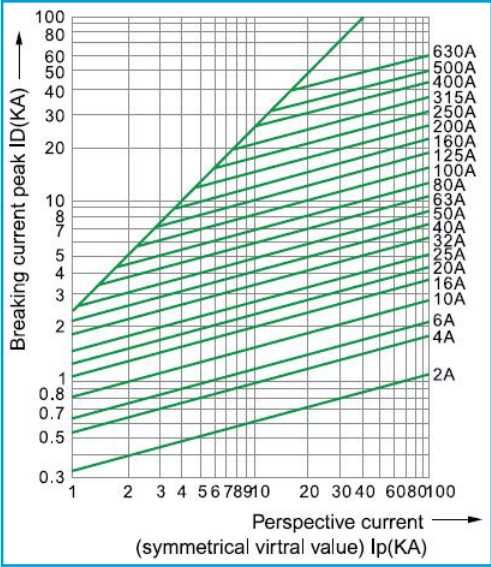
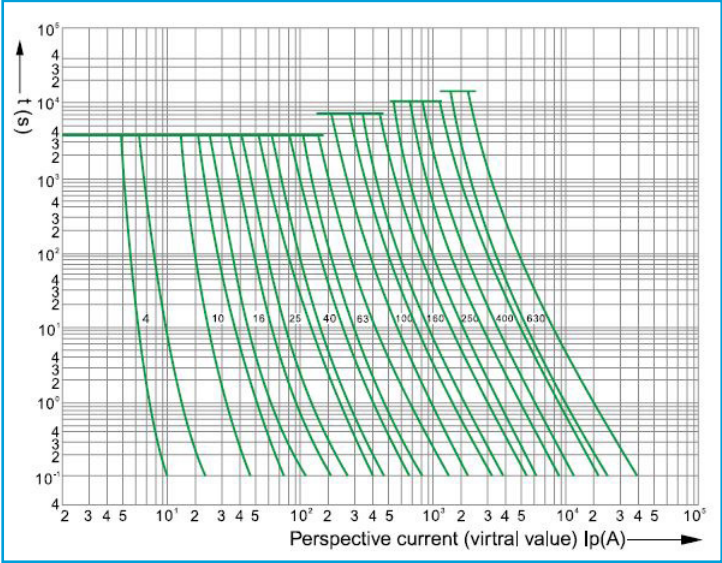
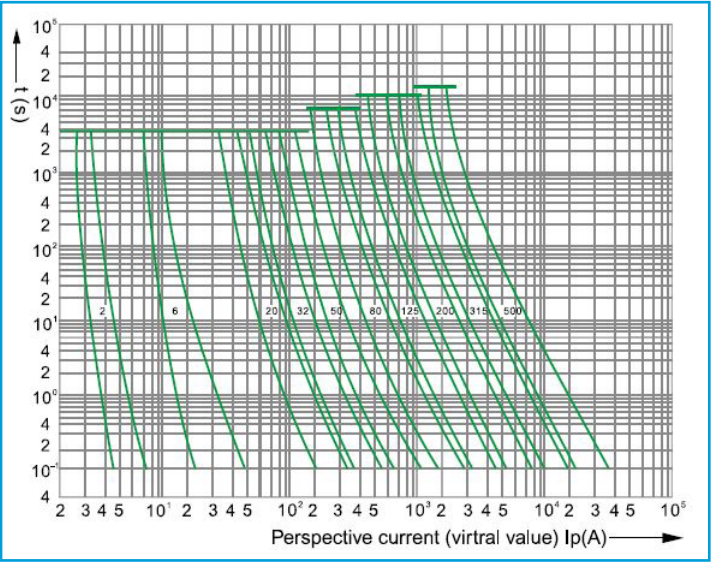


## Ordering Information

Part No	Rated Voltage (V)	Rated Current (A)	Dimensions/Size (mm)								Weight (g)
			A	B	C	$\phi D$	E	F	H	$\phi d$	
RG5-1A	1200V	1A	110	124	140	22	13	1.3	28	6.5	91
RG5-2A	1200V	2A	110	124	140	22	13	1.3	28	6.5	91
RG5-4A	1200V	4A	110	124	140	22	13	1.3	28	6.5	91
RG5-6A	1200V	6A	110	124	140	22	13	1.3	28	6.5	91
RG5-10A	1200V	10A	110	124	140	22	13	1.3	28	6.5	91
RG5-16A	1200V	16A	110	124	140	22	13	1.3	28	6.5	91
RG5-20A	1200V	20A	110	124	140	22	13	1.3	28	6.5	91
RG5-25A	1200V	25A	110	124	140	22	13	1.3	28	6.5	91
RG5-32A	1200V	32A	110	124	140	22	13	1.3	28	6.5	91
RG5-35A	1200V	35A	110	124	140	22	13	1.3	28	6.5	91
RG5-40A	1200V	40A	110	124	140	22	13	1.3	28	6.5	91
RG5-50A	1200V	50A	110	124	140	22	13	1.3	28	6.5	91
RG5-63A	1200V	63A	110	124	140	22	13	1.3	28	6.5	91
RG5-1-75A	1200V	75A	110	124	140	25.5	13	1.3	28	6.5	98

# 1000V Fuses

## Characteristics Curve

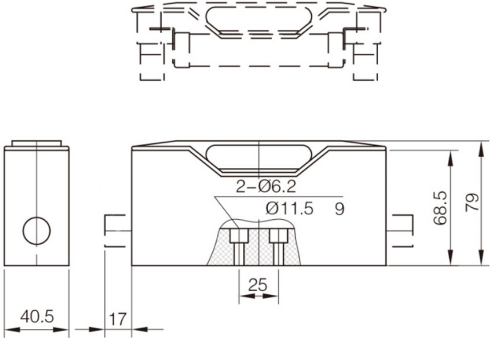


## 1200V Fuse Carrier



0459

1200V Fuse Carrier



Part No.	0459
Rated Voltage	1200V
Rated Current	63A
Matches with fuse body measurement	RG5 1-63A



NEPEAN  
Power

www.nepeanpower.com

For more information please contact:

P: +61 2 4088 2790

E: power@nepean.com