

# 1000V Fault Limiting Fuses RS89BZ

AVAILABLE FROM  
NEPEAN ELECTRONICS



NEPEAN Power is a proven leader in the supply and manufacture of quality engineered solutions, products and technologies. Established in 1994, through the commitment of our dedicated team we have become a supplier of choice.

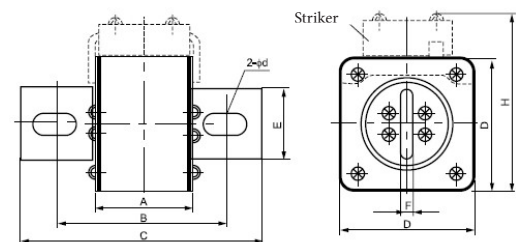
The RS range of fuses from NEPEAN Power offers protection against overload and short-circuit in electric lines (type gG), also available for protection of semiconductor parts and equipment against short-circuit (type aR). Rated voltage up to 1000V and current up to 1600A. The breaking capacity of the fuses is up to 100kA. They are compliant with the IEC269-1/ IEC269-4 and GB13539.1/GS13539.4.

## Features

- Variable cross-section fuse element made from pure silver sheets which are sealed in the melting tube made of high-density porcelain.
- Fuse tube filled with chemically treated high-purity quartz as arc-extinguishing medium.
- The two ends of the melting body are connected to the (knife) contactor by dot welding.
- Both knife contactors and board contacts available.
- Striker/indicator may be installed to the fuse link. When the fuse link breaks, signals are sent out in the case of an indicator, or the switch is pushed to cut the circuit in the case of a striker.

## Ordering Information

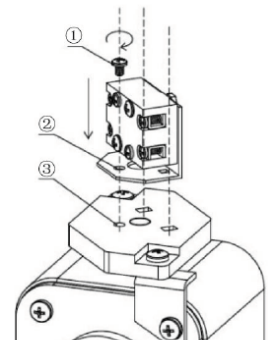
Part Number	Voltage (V)	Amps (A)	Dimensions							φ d	Weight (kg)
			A	B	C	D	E	F	H		
RS89BZ-1000A*	1000	1000	70	107	150	105	50	16	120	14x23	2800
RS89BZ-1100A*	1000	1100	70	107	150	105	50	16	120	14x23	2800
RS89BZ-1250A*	1000	1250	70	107	150	105	50	16	120	14x23	2800
RS89BZ-1400A*	1000	1400	70	107	150	105	50	16	120	14x23	2800
RS89BZ-1600A	1000	1600	70	107	150	105	50	16	120	14x23	2800



\*Stocked Item

## Limit Switch - Ordering Information

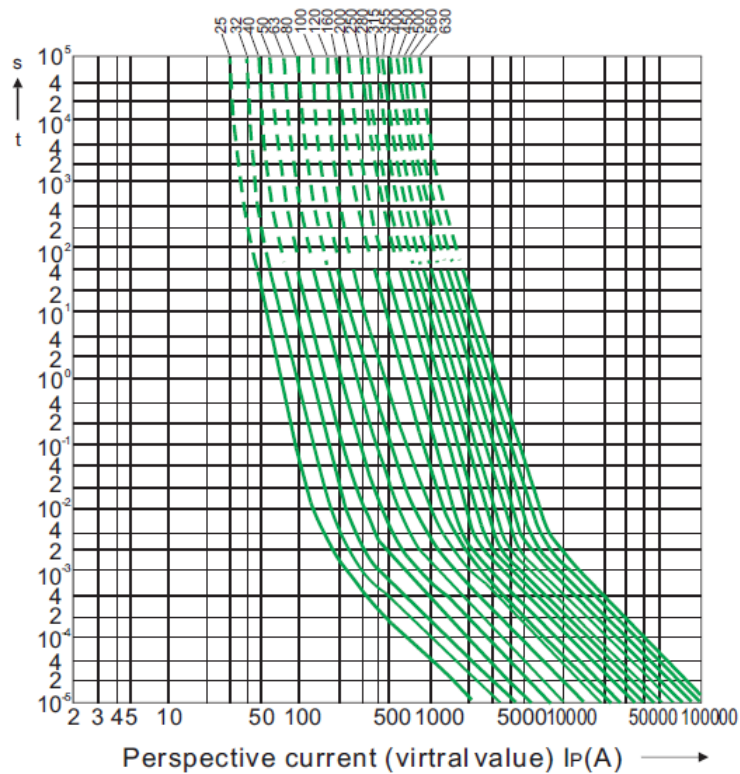
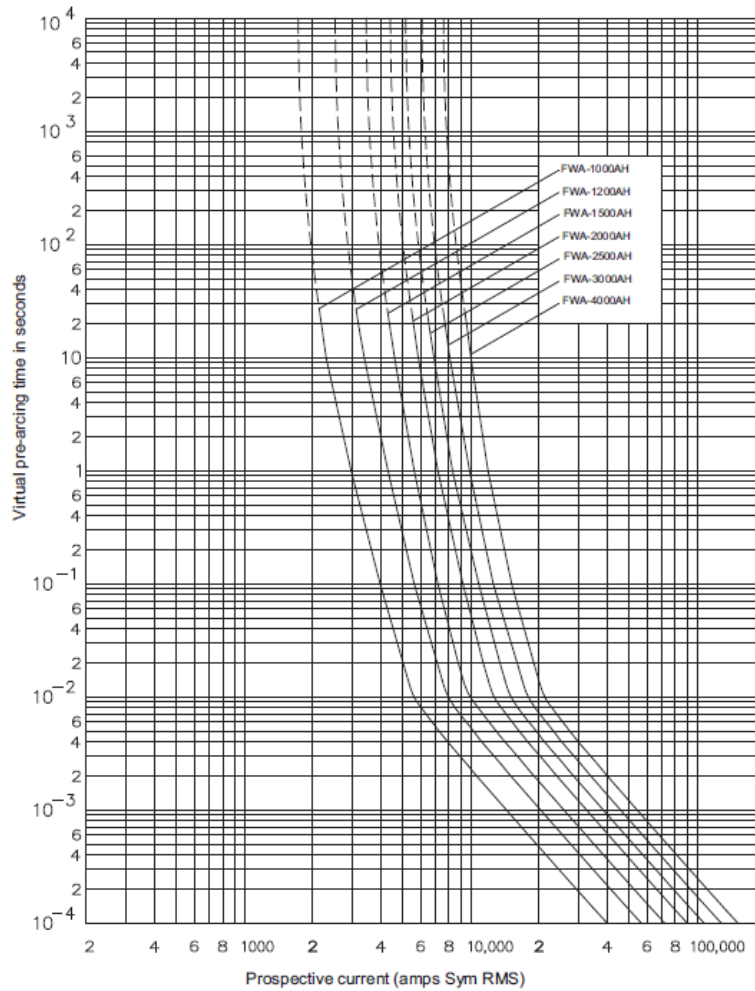
Part Number	Description
ME500046	Fuse Blown Limit Switch to suit RS89BZ fuse (Type B)



# 1000V Fault Limiting Fuses RS89BZ

## Characteristics Curve

Time-current curve - 1000 A to 4000 A



NEPEAN  
Power

www.nepeanpower.com

For more information please contact:

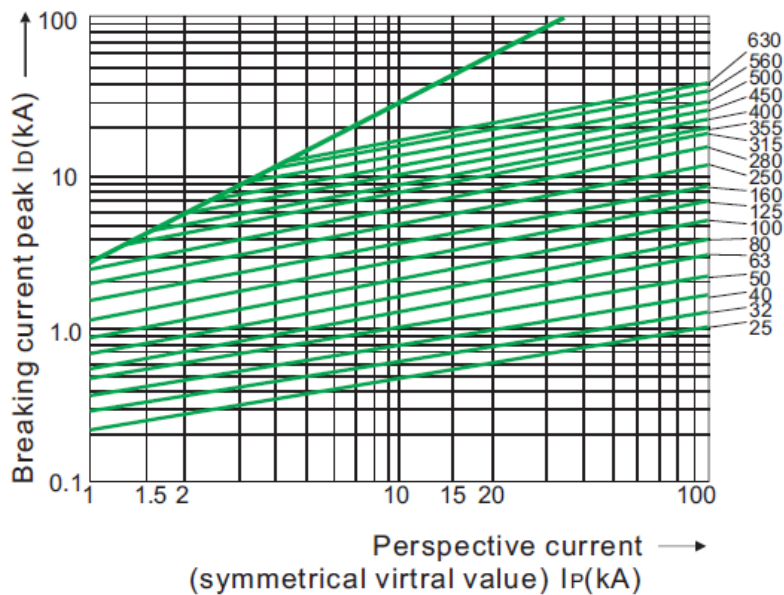
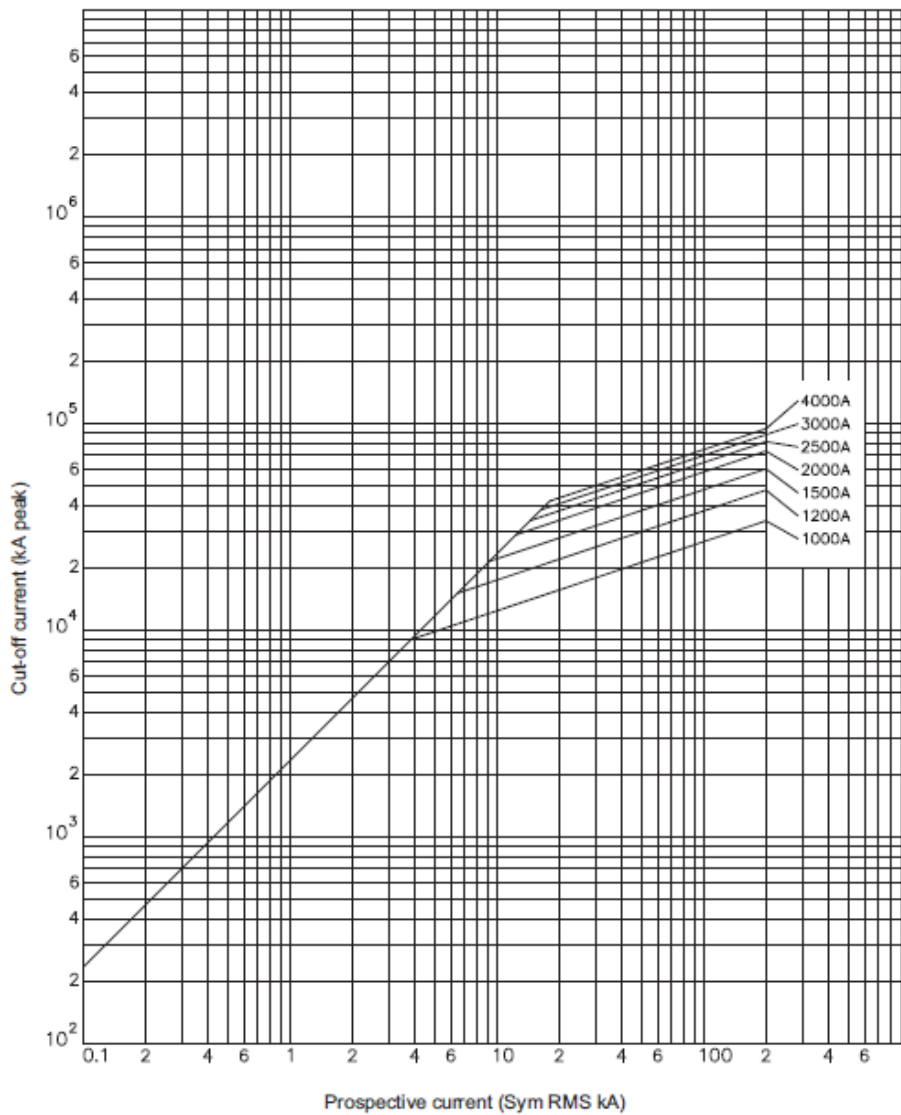
P: +61 2 4088 2790

E: [power@nepean.com](mailto:power@nepean.com)

# 1000V Fault Limiting Fuses RS89BZ

## Characteristics Curve

Cut-off curve - 1000 A to 4000 A



NEPEAN  
Power

www.nepeanpower.com

For more information please contact:

P: +61 2 4088 2790

E: power@nepean.com