

415V Square Pipe Fuses

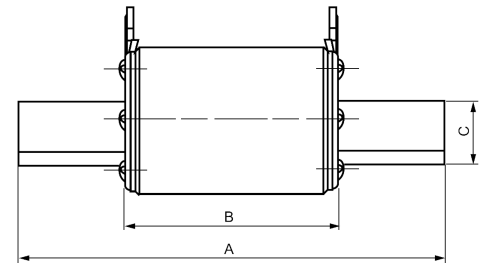
AVAILABLE FROM
NEPEAN ELECTRONICS

NEPEAN Power is a proven leader in the supply and manufacture of quality engineered solutions, products and technologies. Established in 1994, through the commitment of our dedicated team we have become a supplier of choice.

NEPEAN Power's range of 415V Square Pipe Fuses offer superior protection against overload and short-circuit in electric lines (type gG) and protection of semiconductor parts and equipments against short-circuit (type aR). These fuses have a rated voltage up to 415V, a rated breaking capacity up to 120kA and a working frequency of 50Hz AC. These fuses are suitable for a variety of different industry requirements with a range to suit rated currents. Our fuses are manufactured in compliance with GB13539 and IEC269.

Features

- Variable cross-section fuse element made from pure copper or silver sealed in cartridge made from high-duty ceramic material
- Fuse tube filled with chemically treated high-purity quartz sand as arc extinguishing medium
- Dot-welding of fuse element ends to the terminals ensures reliable electric connection and forms insert knife type contacts
- Indicator or striker may be attached to the fuse link to show cutout of fuse or to give various signals and to cut the circuit automatically

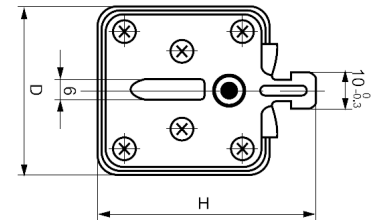


RS32 Series - Type gG (Normal)

Part Number	Rated Current	Rated Voltage	Dimensions (mm)					Weight (g)
			A	B	C	D	H	
RS32 250A gG	250A	415V	135	68	20	46	58	447

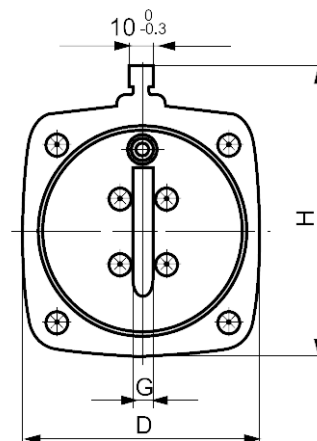
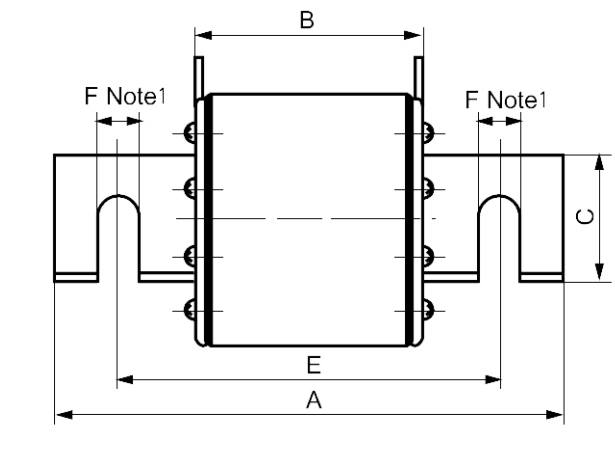
RS32 Series - Type aR (Fast)

Part Number	Rated Current	Rated Voltage	Dimensions (mm)					Weight (g)
			A	B	C	D	H	
RS32 250A aR	250A	415V	135	68	20	46	58	447



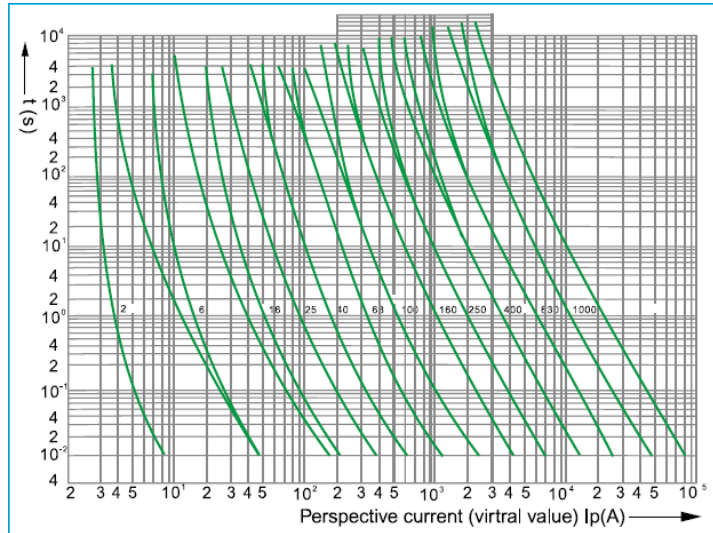
RS39 Series - Type aR (Fast)

Part Number	Rated Current	Rated Voltage	Dimensions (mm)								Weight (g)
			A	B	C	D	E	F	H	G	
RS39 900A aR	900A	415V	200	90	50	97	150	16.5	113	8	2470

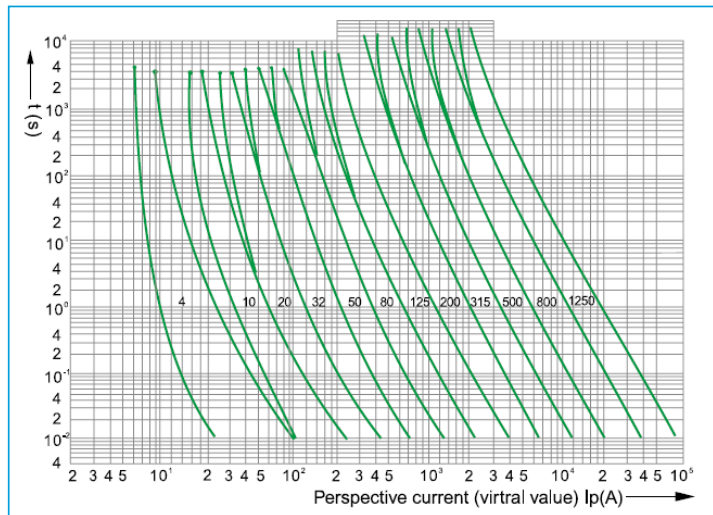


415V Square Pipe Fuses

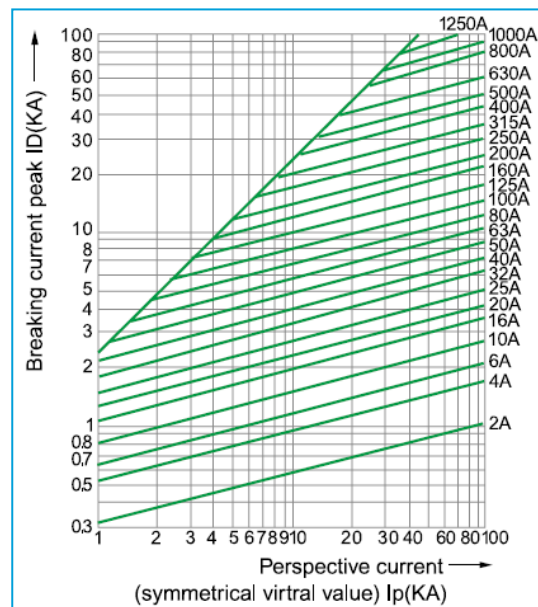
Characteristics Curve



Time-Current Range



Time-Current Range



Breaking-Current Characteristics



NEPEAN
Power

www.nepeanpower.com

For more information please contact:

P: +61 2 4088 2790

E: power@nepean.com