



Haz Light Mk 3

AVAILABLE FROM
NEPEAN ELECTRONICS



NEPEAN Power is a proven leader in the supply and manufacture of quality engineered solutions, products and technologies. Established in 1994, through the commitment of our dedicated team we have become a supplier of choice.

- Key Features**
- Intrinsically Safe
 - Warning/Alarm indicator
 - 650lm Luminance
 - Low Profile
 - Magnetic or Bolt Mounting
 - Long Life
 - Certified for Group 1

Description

The intrinsically safe Haz Light Mk 3 LED luminaire is part of the Nepean area lighting system that is designed to provide plant and area illumination in Group I and hazardous areas. The LLS2 LED finds application on longwalls, around load centres and on machinery such as road headers, continuous miners and roof bolters for general area illumination. In addition, the integrated tri-colour indicator can provide warning or status information to the user.

The Haz Light Mk 3 LED luminaire uses high efficiency LED technology to provide both a compact low profile form factor and a long life maintenance free area illumination solution.

The tri-colour indicator uses, yellow and red LEDs which can be mixed to provide amber. The tricolour indicator is fitted with a diffuser to provide a wide viewing angle.

The luminaire can be powered from a general-purpose intrinsically safe 12V power supply or UPS. A single 3.3Amp power supply can supply up to 5 Haz Lights.

The Haz Light LED luminaire is fitted with two power connectors which allow the LLS2 LED to be daisy chained. A standard 10m long cable is supplied with LLS2 LED however custom length cables can be supplied at an additional cost. The Haz Light luminaire cable can be a maximum of 50m in length.

The sealed construction of the Haz Light luminaire provides an ingress protection rating of IP65.

The Haz Light can be mounted by the integral high strength magnets or may be bolted in place using the two external 12mm mounting holes. These two simple mounting alternatives and integral connector make the Haz Light LED particularly suited for use as longwall area lighting as the lighting system can be quickly removed during longwall relocations.

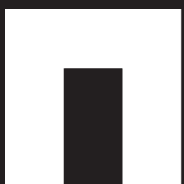
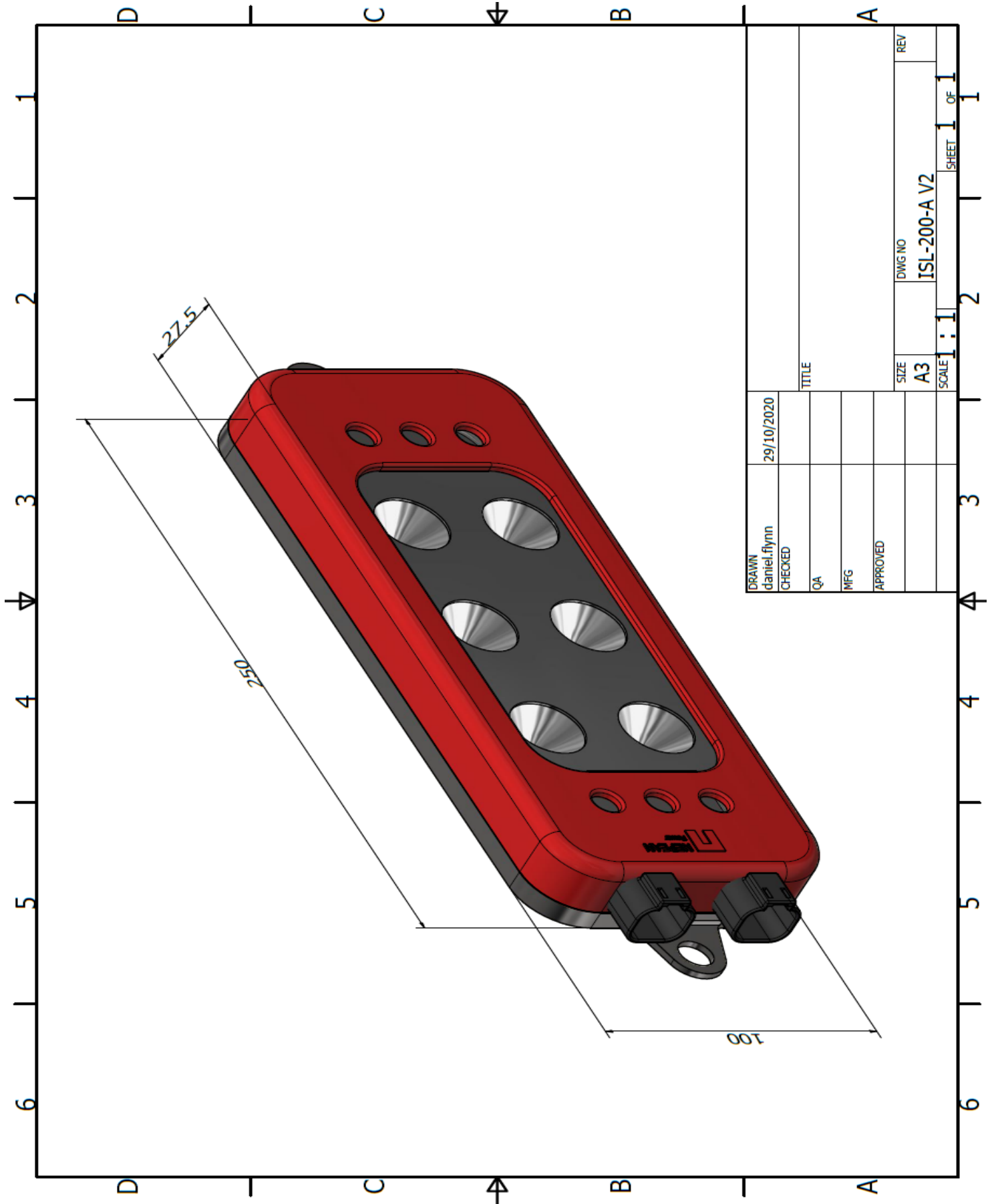
The Haz Light luminaire provides a high intensity, cool white, 90° beam of light with a luminous flux of 650lm.

Each Haz Light luminaire draws a maximum of 500mA at 12V. The LED luminaire type Haz Light Mk 3 is to be IECEx certified for use in Group I and IIB hazardous areas.



Haz Light Mk 3

Diagram



NEPEAN
Power

www.nepeanpower.com

For more information please contact:

P: +61 2 4088 2790

E: power@nepean.com