



HV Phase Indicator

AVAILABLE FROM
NEPEAN ELECTRONICS



X0452



X0452-C

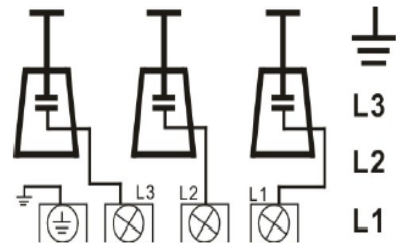
NEPEAN Power is a proven leader in the supply and manufacture of quality engineered solutions, products and technologies. Established in 1994, through the commitment of our dedicated team we have become a supplier of choice.

X0452 (Panel Mount) Features

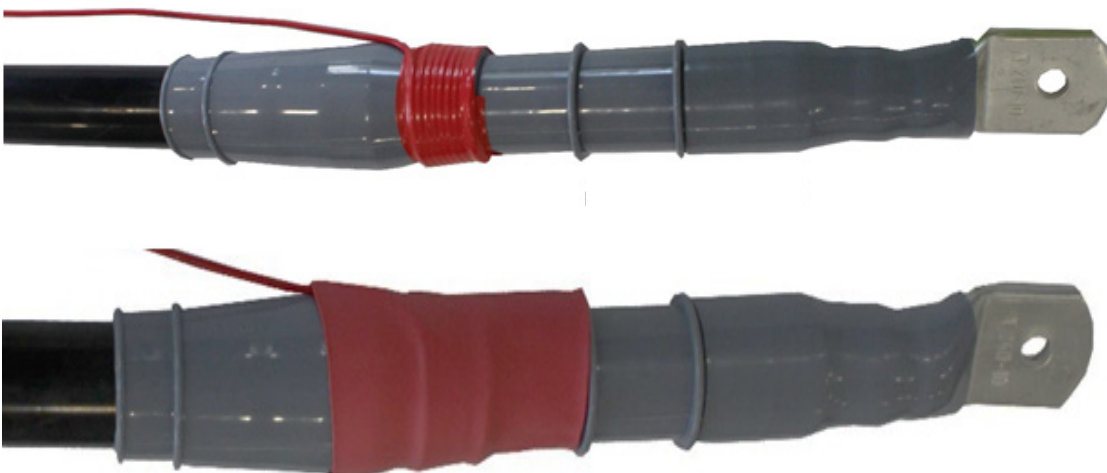
- Can display 3 phases
- 3.6kV to 40.5kV
- Inductively Connected to each phase via coils
- Three red LEDs on the unit itself indicate the presence of voltage
- Physical dimensions: 70 x 35 x 33mm
- Cutout dimensions: 55 x 32mm
- Mounting hole dimensions: $\phi 3.4\text{mm} \times 2$ (distance 64mm)
- Suitable for operation in temperatures between -25°C and 55°C

Ordering Information

Part Number	Description
X0452	3 phase inductively connected Indicator
X0452-C	IP56 Cover to suit X0452 + X0348 Phase Indicator

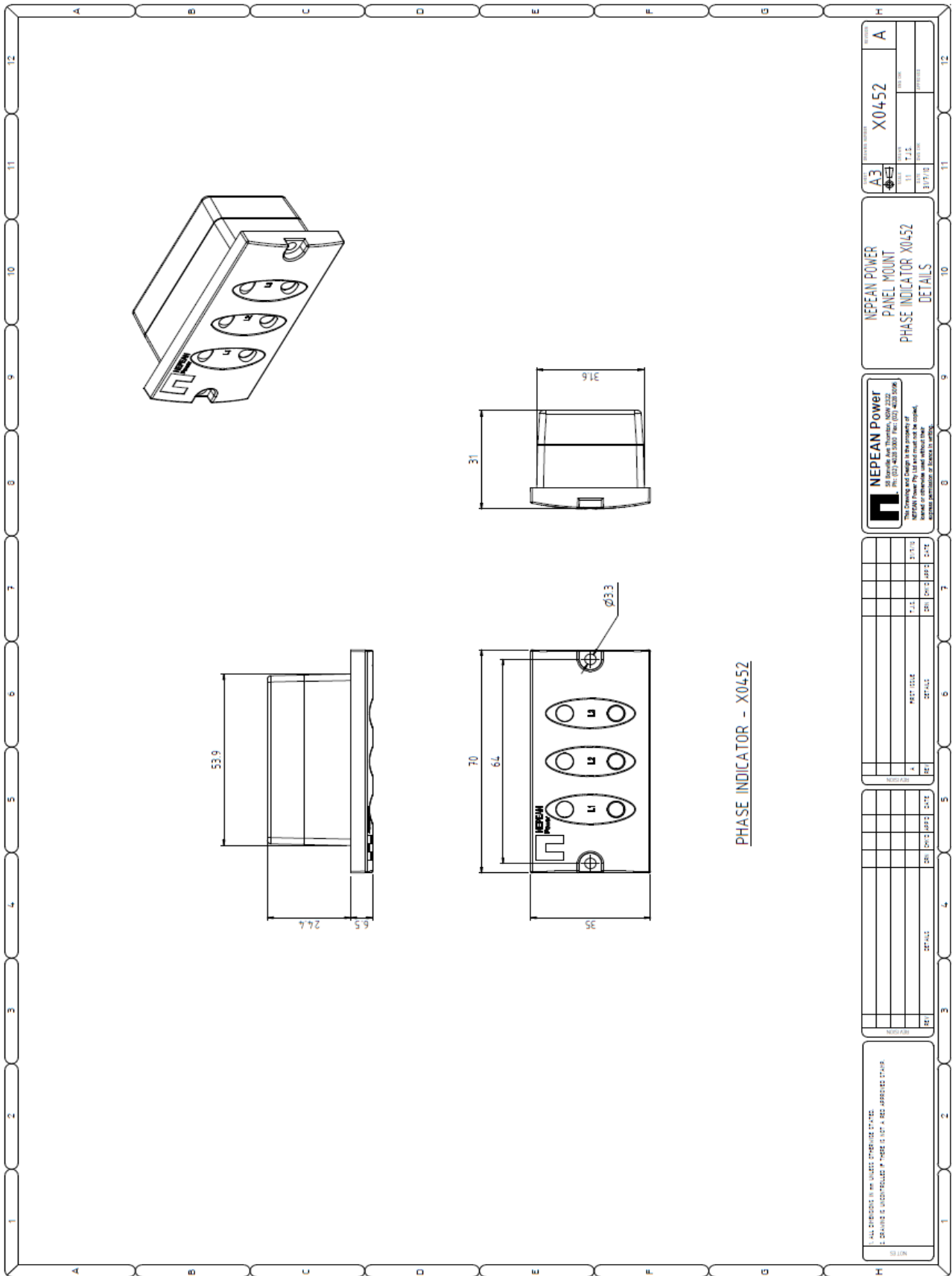


Application



HV Phase Indicator

Diagram



PART NUMBER		X0452	
REV		A	
DATE	BY	DATE	BY
11/11/10	P.J.S.	11/11/10	P.J.S.
DRAWN		3/19/10	

NEPEAN POWER
PANEL MOUNT
PHASE INDICATOR X0452
DETAILS

NEPEAN Power
18 Bonville Ave Thornhill, ON L3R 9Z2
Tel: (905) 709-2200 Fax: (905) 709-2201
www.nepean.com
NEPEAN Power Pty Ltd and must not be copied,
reproduced or otherwise used without the
express permission of NEPEAN Power.

REV	DATE	BY	APP'D
1	11/11/10	P.J.S.	P.J.S.
2	11/11/10	P.J.S.	P.J.S.
3	11/11/10	P.J.S.	P.J.S.
4	11/11/10	P.J.S.	P.J.S.

REV	DATE	BY	APP'D
1	11/11/10	P.J.S.	P.J.S.
2	11/11/10	P.J.S.	P.J.S.
3	11/11/10	P.J.S.	P.J.S.
4	11/11/10	P.J.S.	P.J.S.

THIS DRAWING IS THE PROPERTY OF NEPEAN POWER. IT IS TO BE USED ONLY FOR THE PROJECT AND NOT TO BE REPRODUCED OR COPIED IN ANY MANNER WITHOUT THE WRITTEN PERMISSION OF NEPEAN POWER.